

CERTIFIED LAND CORNER RECORDATION

DESCRIPTION OF CORNER EVIDENCE FOUND, AND ORIGINAL RECORD (if known)

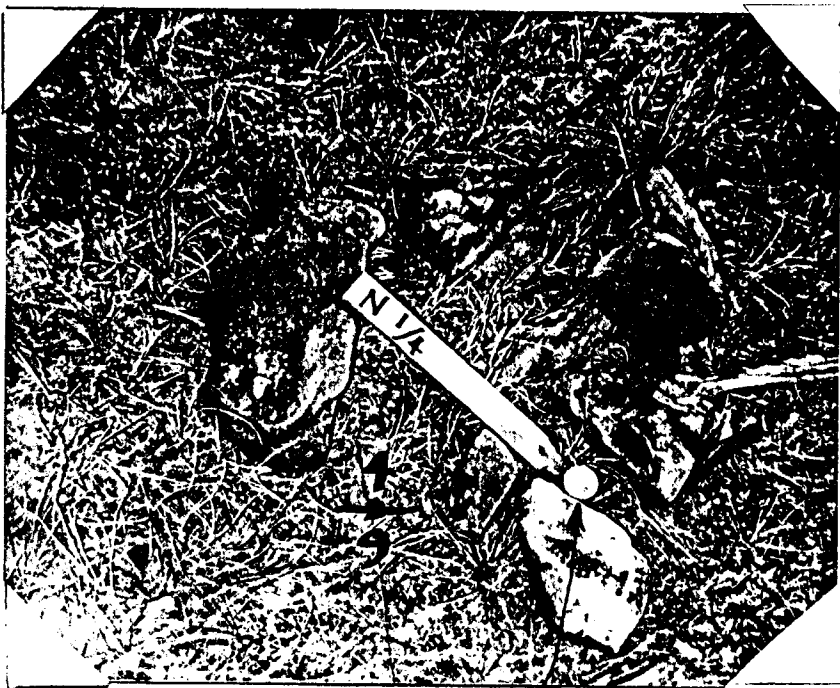
Granite boulder 28x8x7, 15 chains West from foot of bluff.

DESCRIPTION OF MONUMENT AND ACCESSORIES ESTABLISHED TO PERPETUATE THE ORIGINAL LOCATION OF THIS CORNER:

Searched diligently for stone over a 2-acre area but no stone found. Set 1 1/2" aluminum cap as shown in photo below.

SKETCH, WITH COURSE AND DISTANCE TO ADJACENT CORNER IF DETERMINED IN THIS SURVEY. (May Sketch or Paste Reproduction on Reverse Side.)

See diagram other side.



Aluminium Cap

I, Larry T. Perry L.S. certify that I have carefully performed or reviewed the work done on the diagrammed corner as reported on this recordation form and approve the same.

Larry T. Perry L.S. 3047
Signature of Surveyor

Registration No.

STATE OF WYOMING,
Office of Clerk and Recorder,
County of Saramie

797635

This "corner record" was filed for record on the JUL 9 1985 day of JULY, 1985, was noted on the cross-index plat and is assigned page No. _____, in book No. _____.

Janet C. Whitehead
County Official

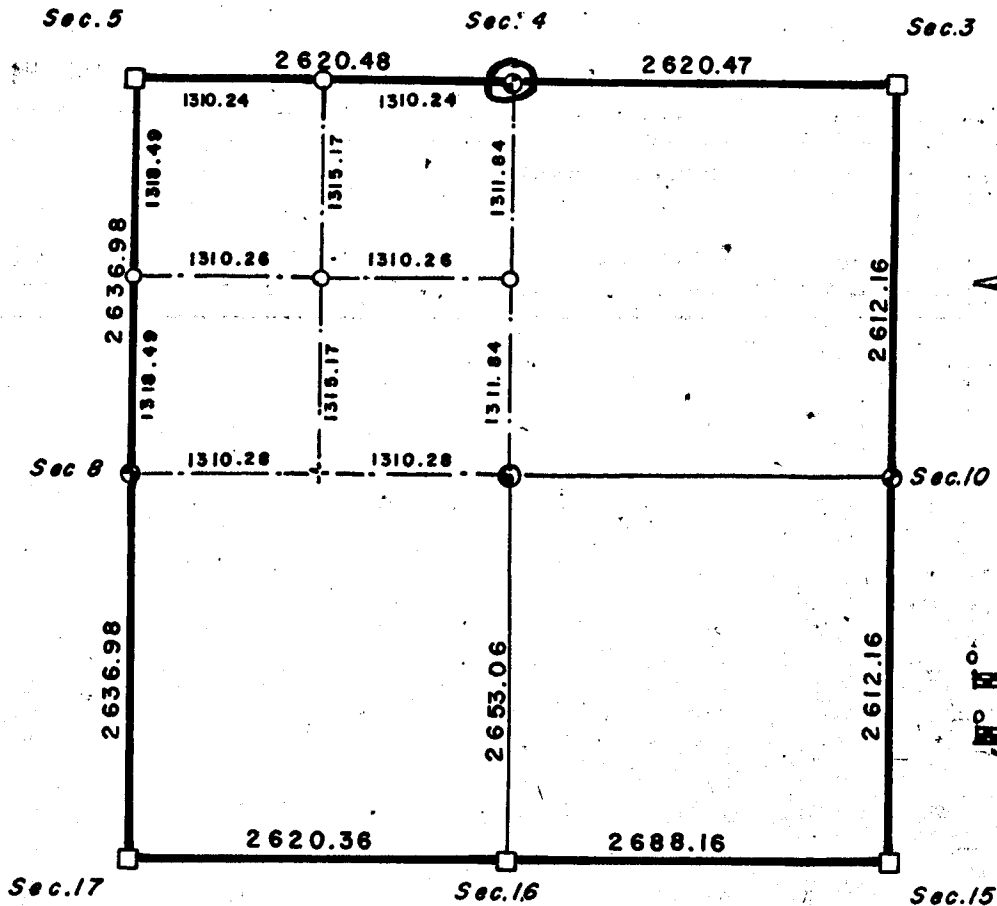
Cross Index No. _____	T. _____	R. _____	Mer. _____
_____	T. _____	R. _____	Mer. _____
_____	T. _____	R. _____	Mer. _____
_____	T. _____	R. _____	Mer. _____
_____	T. _____	R. _____	Mer. _____
_____	T. _____	R. _____	Mer. _____
_____	T. _____	R. _____	Mer. _____

E-11 13 ~ 69

Section 9

T. 13 N., R. 69 W., G. 14 E.

LARAMIE COUNTY, WYOMING



LEGEND

- Stone found
- Aluminum cap set, No stone found, 1/4 corner
- ⊙ Center of Section, Aluminum cap set
- Aluminum cap set, 1/16 corner
- ⊕ Nail set, 1/16

State of Wyoming } ss
 County of Laramie }

CERTIFICATE of SURVEY

I, Larry T. Perry, a licensed surveyor in the State of Wyoming do hereby certify and declare that this drawing was prepared from field notes of a survey performed by me during the month of June 1985 A.D. and that it represents the corners as found and set. The 1/4 corners set were established in accordance with the BLM manual after a diligent search for the original stone monuments as set by the G.L.O. in the year of 1870.

Larry T. Perry L.S.
 Larry T. Perry, L.S.
 Wyoming L.S. 3047